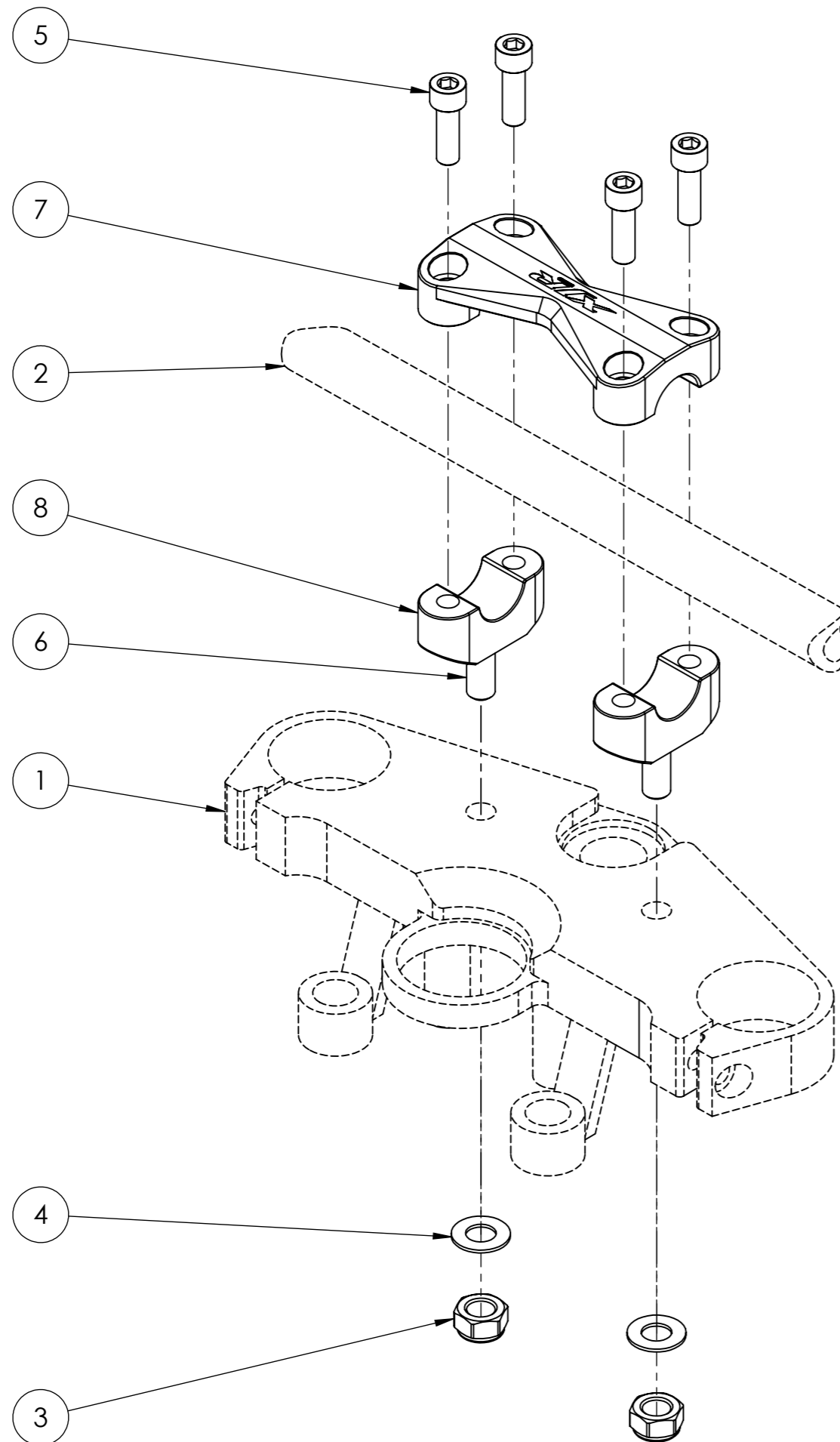


11 Havant Business Centre Tel: +44 02392 481 188
Harts Farm Way Fax: +44 02392 492 458
Havant admin@oberon-performance.co.uk
Hampshire PO91 HU Web: oberon-performance.co.uk
UK © Oberon Performance Limited

ITEM No.	DESCRIPTION	QTY
1	OEM Top Yoke	1
2	Handlebar	1
3	M10 Nyloc Nuts	2
4	M10 Washers	2
5	M8 x 20 Bolts	4
6	M10 Stud	2
7	Top Clamp	1
8	Lower Clamp	2

REVISIONS		
REV	DESCRIPTION	DATE



For Yamaha XJR1200 and XJR1300 motorcycles

- (1) Remove the original clamp by first unscrewing the four securing M8 bolts (shown as part 5 in diagram) and releasing the top clamp from the handlebar.
- (2) Next undo the 2 x M10 nuts (shown as part 3) under the OEM yoke that is holding the lower clamps (shown as 8) and remove.
- (3) Clean all the mating areas and ensure there is no debris left for interference.
- (4) Position the provided 2 Oberon lower clamps (parts 8) into position and screw on the M10 nuts (parts 3). Tighten sufficiently so that it is still possible to rotate the lower clamps with ease.
- (5) Position the handlebars into the lower clamps and ensure they rest without movement.
- (6) Place the top clamp (part 7) and secure with the 4 x M8 bolts (parts 5 that have been supplied in the kit). Make sure that the bolts are NOT fully tightened.
- (7) Align centrally and rotate the handlebars into the desired position, and tighten down the M8 bolts in increments so they grip the handle bars snugly in alternating square pattern. E.g. Top-left, to bottom-right, bottom-left to top-right.
- (8) Tighten the M10 nuts (parts 3).
- (9) Tighten the M8 bolts (parts 5).
- (10) Turn the steering from lock to lock and check all clearances for obstructions or snags.
- (11) **Finally tighten all fasteners to the manufacturer's recommended torque settings.**
- (12) Go for a short test ride and adjust the handlebar position if necessary.
- (13) Do a final torque settings and check all fasteners again a few days later, ensuring everything has had time to settle.

DO NOT SCALE DRAWING REVISION

NAME	SIGNATURE	DATE

DRAWN

CHK'D

APPV'D

MFG

Q.A

UNLESS OTHERWISE SPECIFIED: DIMENSIONS ARE IN MILLIMETERS

TOLERANCES: LINEAR: +/- 0.10 ANGULAR: +/- 0.5°

DEBURR AND BREAK SHARP EDGES

FINISH:

WEIGHT: MATERIAL:

TITLE:

Yamaha XJR1200/XJR1300 Top Clamp Set

DWG NO.

HTC-0005

SCALE:1:2 A3 SHEET 1 OF 1